

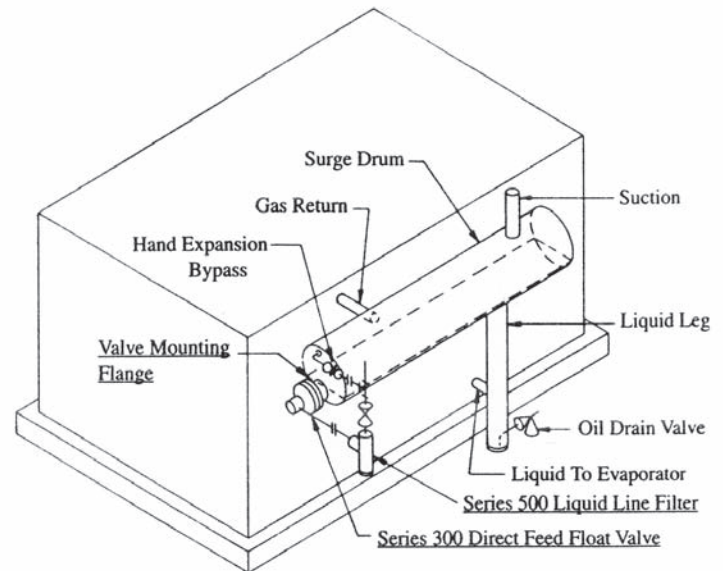
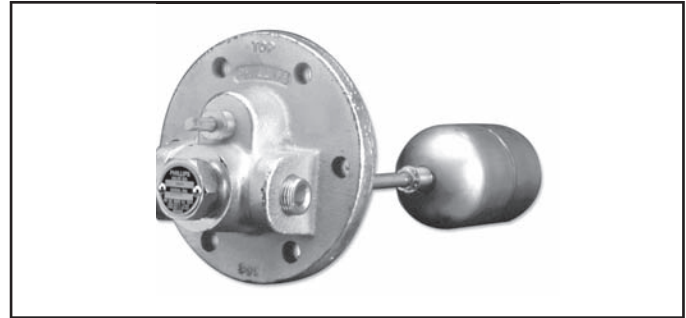
MODULATING LIQUID LEVEL CONTROL For Ammonia (R-717) and Halocarbon Refrigerants

- **Pressure Rating: 300PSI (-20°F – +240°F)**
- **ASTM A536 Gr. 65-45-12 Ductile Iron Body**

Design Function

The Phillips® Series 300H internal mounting fixed level low side float valves are modulating type liquid level controls, designed primarily for use with ammonia (R-717). The valves incorporate a replaceable cartridge that contains the working needle and seat. The cartridge can be removed without pump down of the surge drum or evaporator due to a secondary shut-off arrangement built into the valve. A typical application is shown below and is for reference only. H. A. Phillips & Co. can provide modifications for manufacturers desiring to incorporate the valves in special process equipment such as ice cream freezers. This series of valves is available with smaller valve bodies and special gaskets. When used in halocarbon systems, these valves can be supplied with heavier float balls. Similar float valves are available without the back-seating arrangement.

When greater capacities are required, these valves can be used as pilot float valves in conjunction with Phillips® Series 701 Pilot Operated Valves. See Bulletin 701S for engineering data.



VALVE CAPACITIES - TONS*

VALVE NUMBER**	ORIFICE (IN.)	Cv	AMMONIA (R-717)					R-22				
			INLET PRESSURE (PSIG)					INLET PRESSURE (PSIG)				
			80†	100	125	160	200	80†	100	125	160	200
300H & 300HM	3/32D	.076	3.7	4.0	4.6	4.9	5.5	.94	.94	1.1	1.2	1.3
	3/32	.098	4.8	5.1	5.9	6.3	7.1	1.2	1.2	1.4	1.5	1.6
	7/64	.16	7.8	8.4	9.5	10	12	1.9	2.0	2.2	2.4	2.5
	1/8	.22	11	12	13	14	16	2.6	2.8	3.0	3.3	3.5
	9/64	.26	13	14	15	17	19	3.1	3.3	3.6	3.9	4.0
300A & 300AM	5/32	.35	16	18	21	23	25	4.2	4.4	4.8	5.2	5.6
	3/16	.40	20	22	24	27	29	4.8	5.0	5.5	6.0	6.4

* Calculated for operation with saturated liquid at the valve inlet. To develop these capacities, the pressure drop across the valve must be greater than one-half the inlet absolute pressure. When liquid is subcooled, valve capacity will increase. To calculate increase, see Liquid Sub-Cooling Factor table.

**Add suffix 'F' when ordering a valve for use with a halocarbon refrigerant.

† Valve capacities at 20 to 25 PSIG are 50% of these ratings. Outlet pressure must be 0 PSIG or less.

LIQUID SUB-COOLING FACTORS

°F OF SUB-COOLING	5	10	20	30	50
FACTOR	1.25	1.47	1.75	1.9	2.2

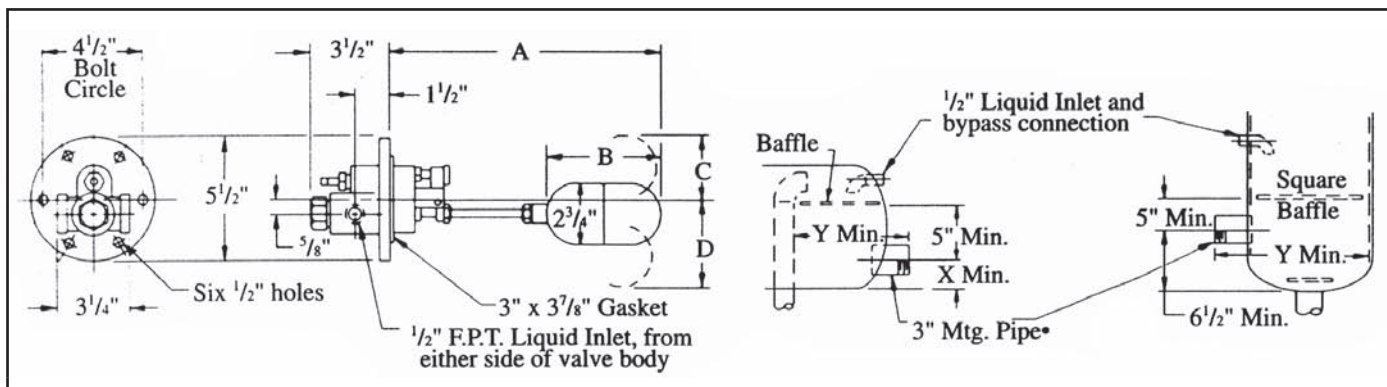
Consult H. A. Phillips & Co. if special applications, other refrigerants, or unusual liquid conditions prevail.

300H – Float Valve

Installation and Operation

Typical application of these valves is to a vertical or horizontal surge drum at individual evaporators. The valve is mounted to the vessel by a 3" pipe. The pipe may be threaded for use with a screw-type mounting flange. Plain end pipe may be welded to a socket or butt weld mounting flange. See the table below for pipe length to be used with the various mounting flanges. A liquid line filter is recommended. A bypass hand expansion valve is useful during servicing of the cartridge while the evaporator remains in use. When the refrigeration load is greatly reduced on an individual air unit, or if fans are shut off, it is advisable to utilize a liquid line solenoid valve ahead of the float valve in order to stop liquid feed. Otherwise, the body of liquid in the surge drum will flow down into the coil and the float valve will continue feeding, thus filling the coil with liquid refrigerant. Room thermostats can be utilized to stop liquid feed to the evaporators.

SERIES 300H VALVE DIMENSIONS



SERIES 300H VALVES – DATA

VALVE NO.*	DIMENSIONS (INCHES)						SHIPPING WT. (LBS.)
	A	B	C	D	X	Y	
300H, 300HD	12	5	3.5	3.25	4	12.5	13
300HM, 300HMD	12	5	2.75	2.75	3	12.5	13
300A	13	7.5	3.75	3.5	4	13.5	14
300AM	13	7.5	2.75	2.75	3	13.5	14

*Suffix 'D' used when the 3/32" cartridge is used in conjunction with a 'throttling disc' installed on the valve pusher downstream of the cartridge.

MOUNTING FLANGES – DATA

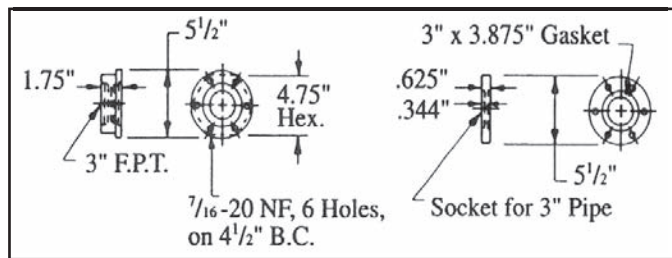
FLANGE NO.	TYPE OF FLANGE	MOUNTING		SHIPPING WT. (LBS.)
		S/40 PIPE	PIPE LENGTH*	
399	MALE THREAD	3"	3.5"	7
300WF3	SOCKET WELD	3"	4.0"	4

*Pipe lengths indicated are maximum; shorter lengths may be used.

ORDERING INSTRUCTIONS

Specify:

- (1) Valve Number
- (2) Orifice Size
- (3) Flange Number
- (4) Filter—With or Without



ANGLE FILTER

FILTER NO.	CONNECTIONS F.P.T.	SHIPPING WEIGHT (LBS.)
510-1/2	1/2"	7

H. A. Phillips & Co.

1612 Louise Drive
 South Elgin, IL 60177-2242 U.S.A.
 Phone: (630) 377-0050 • Fax: (630) 377-2706
 E-mail: info@haphillips.com
 or visit us @ www.haphillips.com

